



**A COOL NEW
INNOVATION
IN POWER
DISTRIBUTION!**

ECOLOGICALLY FRIENDLY

“Green Mini - Substation”

- **SF6 FREE**
- **OIL FREE**
- **GAS FREE**

PM
Switchboards

SWITCHBOARDS PTY LTD
5 LINKS AVENUE NORTH
EAGLE FARM QUEENSLAND 4009
Phone: (07) 3630 2711 Fax: (07) 3630 2722
Contact: Gary Smith
Email: gsmith@pmswitchboards.com.au

www.pmswitchboards.com.au

ECOLOGICALLY FRIENDLY

“Green Mini - Substation”

Innovation

Combining ingenuity of internal and external resources, PM Switchboards Pty Ltd a subsidiary of the Pacific Services Group Pty Ltd have developed the revolutionary new Ecologically Friendly “Mini - Substation”. Strong environmental risks and concerns raised by leading Consultants, Power Suppliers and End Users over oil and gas leaks and fires encouraged PM Switchboards to produce a break-through product with growing potential and demand. Environmental risks have been lowered, paving the way for many applications in the industry including: the building industry (high rise), water industry (water tables, dams etc), utilities, industrial projects and the mining industry.

Engineered Package Solution

By tailoring an engineered package solution we are able to provide electrical equipment without Oil or Gas for the electrical distribution market. The Medium Voltage switchgear is SF6, Oil & Fuse Free, using the latest vacuum technology. The transformer is of a Dry Type Vacuum Cast Resin design with fire retardant, the ability in the prevention from being a fire hazard. De-rating may be required for continuous operation above 40° C. The transformer ventilation is assisted in extreme conditions by an integrated temperature controller & cooling fans. The Low Voltage switchboard is supported with a TF™ Circuit Breaker Stack, this once again is an innovation of the renowned work from PM Switchboards Pty Ltd. The Mini—Substation may be supplemented with a communication panel. We are open to engineering packages that will suite your requirements!

Specification Of Standards

The new Ecologically friendly innovation, “Green Mini-Substation”, complies with the following Standards.

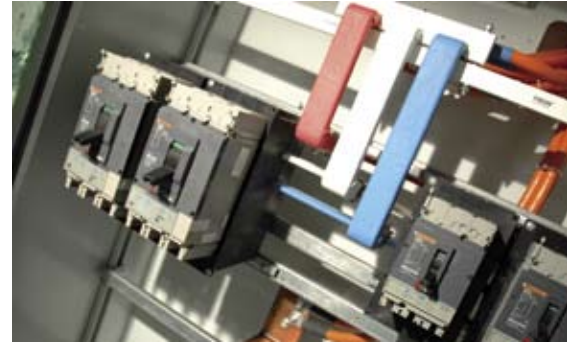
- Substation AS/IEC 62271-202
- Transformer AS/IEC 60076-11
- RMU AS/IEC 62271-100
- AS/IEC 62271-102
- LV Switchboard AS/IEC 60439-1

Enclosure

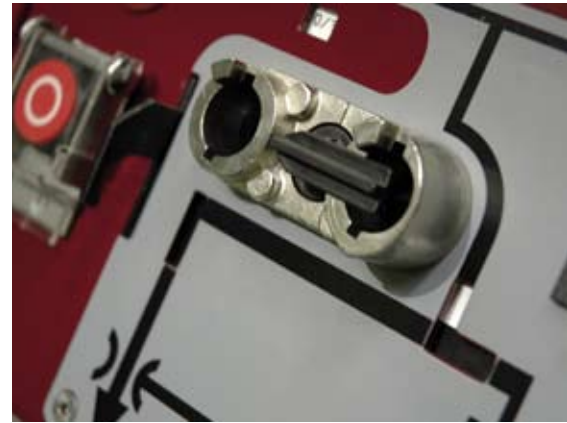
- Degree of Protection IP45 (Double return louvers, stainless steel wire mesh).
- Segregation Separate MV, LV, Transformer & SCADA compartments
- Double Skinned Roof With anti-condensate paint.
- Material Powder coated mild steel (stainless steel optional).

Operational Features

- Off-load tap changing Taps accessed via removable louver panels
- Routine Maintenance Easy access!
- Interchangeable Breakers TF™ Circuit breaker stack—Full Isolation when unplugged
- RMU New vacuum technology
- Visible Isolation



Innovation! TF™ Circuit Breaker Stack.



Specially Designed Weatherproof Louver Panels